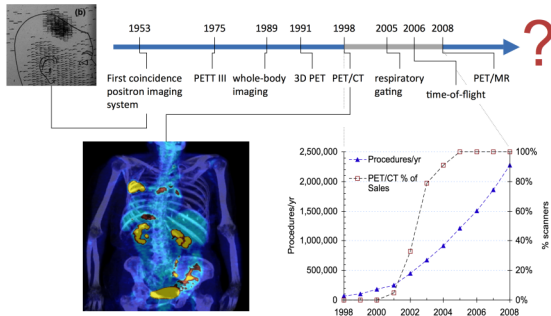


QIBA Quantitative PET/CT: Accelerating development of new therapies and improving assessment of response

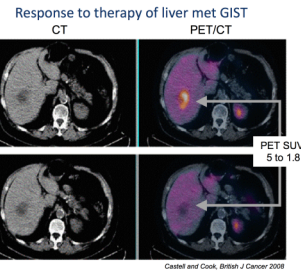
PET-CT: A Proud History of Innovation



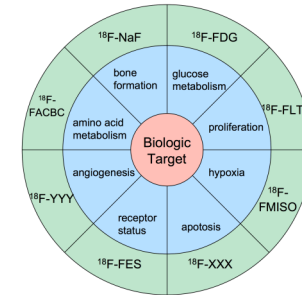
What's next? Quantitative PET to Characterize Disease Hallmarks

Drivers

- Clinical research, Clinical trials, and Drug discovery
- New molecular diagnostic agents
- Assessing individual response to therapy
- SUVs are now routinely reported, and are asked for, by referring physicians



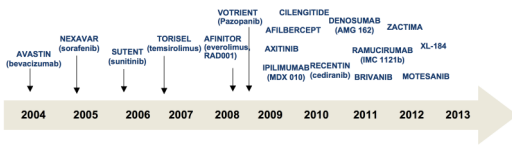
Biomarkers To Quantify Hallmarks of Cancer



- New molecular diagnostic agents
- New uses for existing agents

Assist with increasing number of oncology targeted pharmaceuticals

Treatment Population	2007	2008	2009	2010	2011	2012	2013	2014	2015
Cancer patients treated with Anti-angiogenesis treatment	2.8%	3.4%	4.4%	5.3%	6.7%	8.1%	9.5%	10.3%	11.6%



Quantitation Improves Characterization of Disease Hallmarks

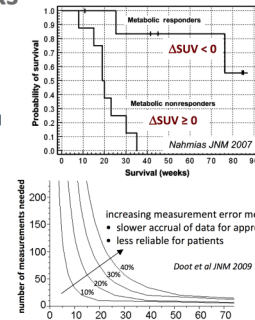
Improve individual patient care

- Clinically proven detection and longitudinal quantitation for follow-up
- Moves imaging from diagnostics and staging to therapy assessment

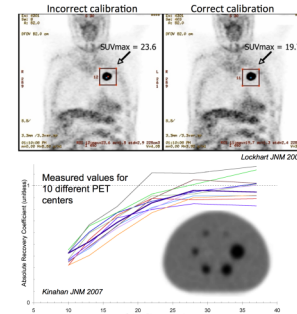
Accelerate adoption of new molecular diagnostics

Make clinical trials of new therapies more effective

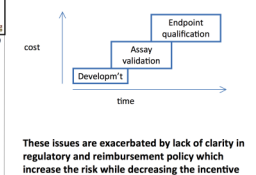
All tied to quantitative accuracy



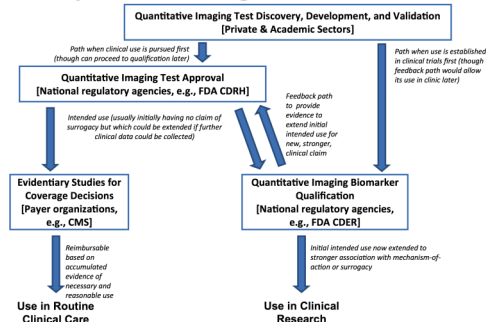
Technical as well as Business Obstacles Impede Realization of the Opportunity



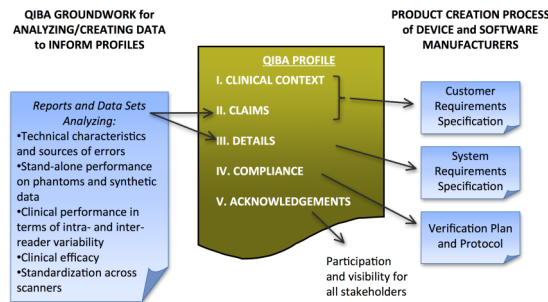
Efforts by individual manufacturers to qualify quantitative imaging applications:
•Are more costly, and
•Run over longer time periods...
...than the business model of device and software manufacturers generally support.



QIBA is an Active Sponsor in Regulatory Pathways that Leverage Collaboration



QIBA Leverages Resources and Bridges Perspectives Across Communities



What we've done and how you can participate

- ✓ Collection of recommendations for quantitative FDG-PET
 - ✓ Presentation (joint with FNHI) to FDA
 - ✓ NIBIB grant application
 - ✓ Year 1 research targets
 - Collaboration with UPICT on Protocols
 - Bi-weekly telephone conferences
 - Annual QIBA meetings and updates at RSNA and SNM
 - Working visits with vendors
 - Profile development
 - Year 2 research targets
 - Profile testing and approval
 - Implementation of Profiles by QIBA and vendors
 - Clinical use of Profiles
- Completed, In progress, TBD

More information at www.rsna.org/research/qiba/