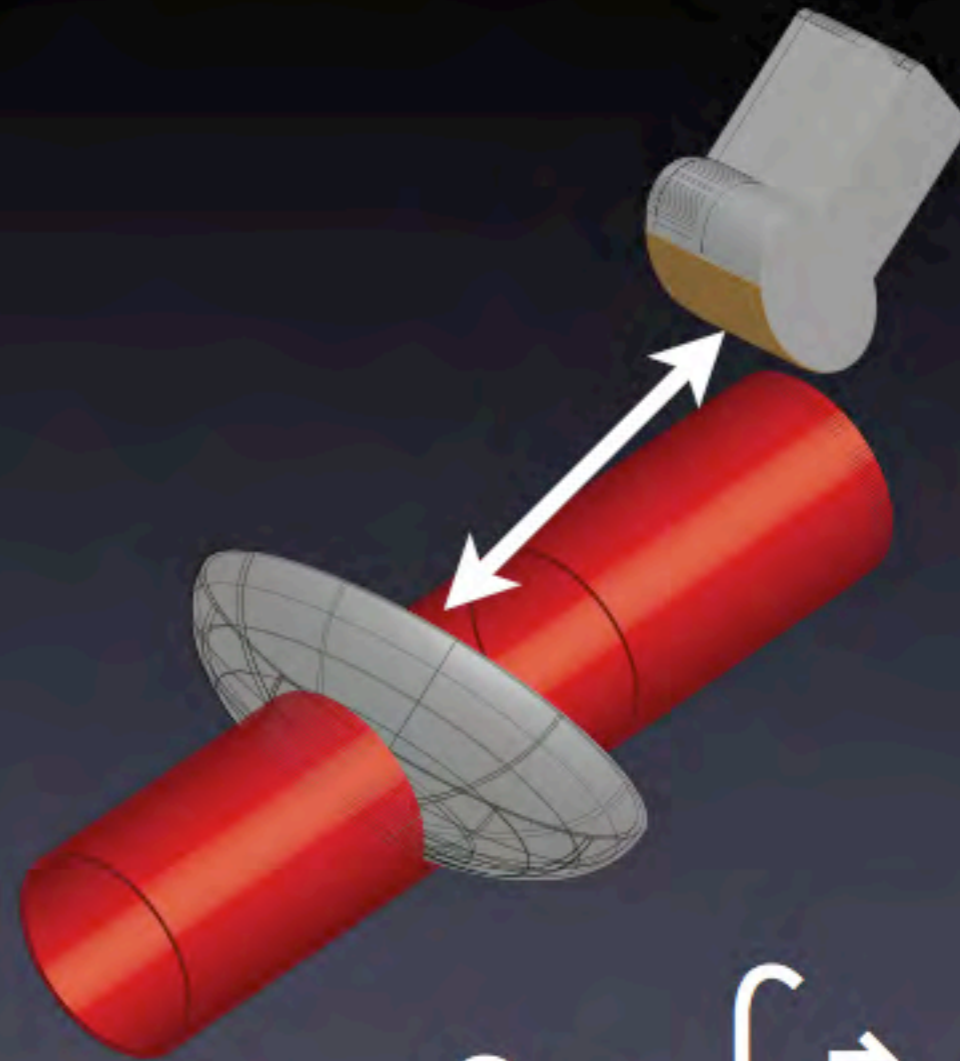


Flux

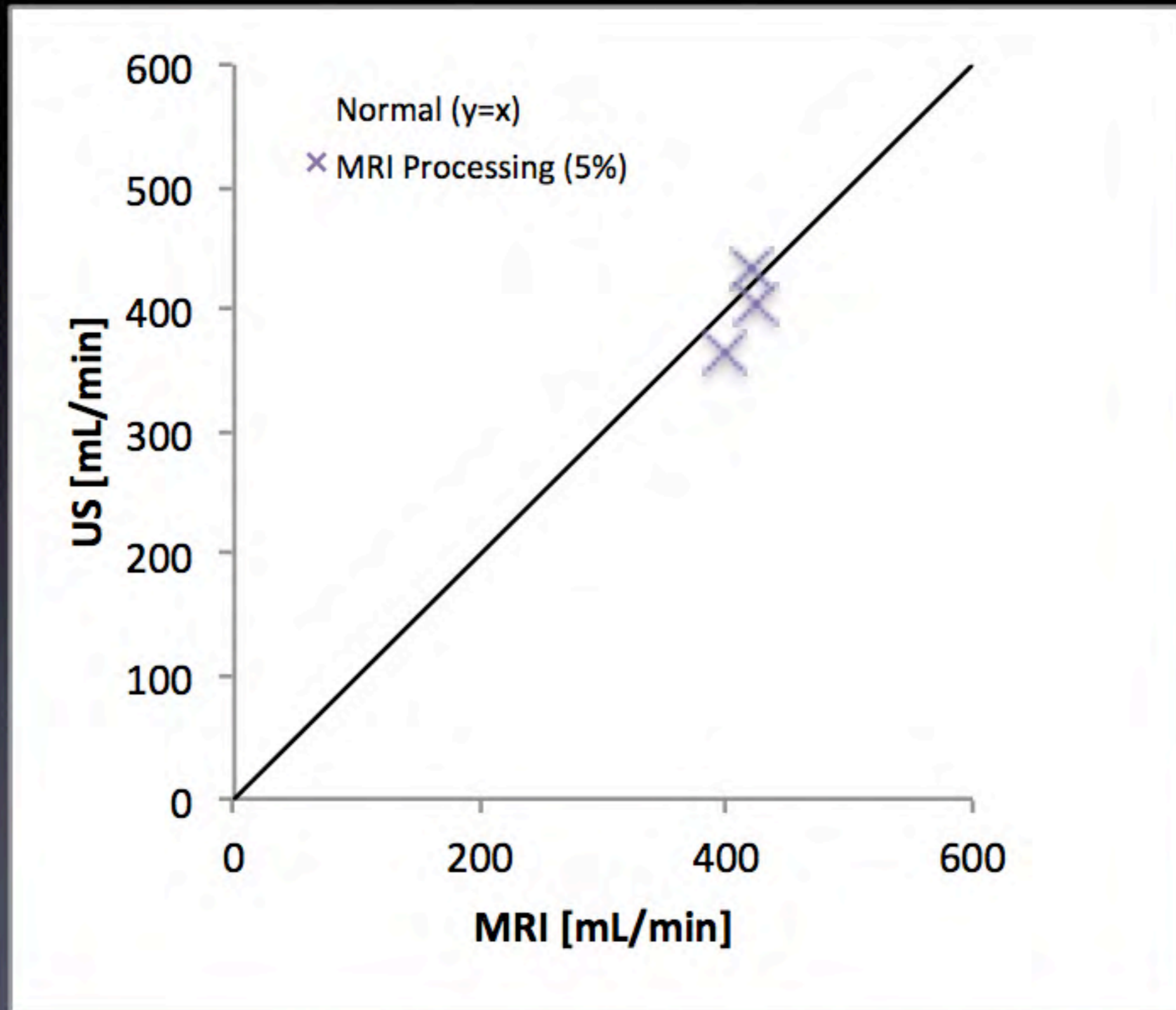
- Flow per unit area
- Flow is movement of blood per time
- Flux is a vector



Carl Friedrich Gauss
(1777–1855)
(Gauss' Theorem)

$$\mathcal{Q} = \int_{\mathcal{S}} \vec{v} \cdot d\vec{A}$$

Gauss' Theorem



* MR processing does not perform partial volume correction