



AIUM/QIBA Ultrasound Volume Blood Flow Biomarker

CALL SUMMARY 4-May-2020

Action Items in RED.

Attendance:

Brian Fowlkes, Oliver Kripfgans, Mark Lockhart, Jin Gao, David Dubberstein, Cristel Baiu, Paul Carson, Matthew Bruce, Jon Rubin, Shiram Sethuraman, Ron Leichner,

1. Review of Previous Call Summary
 - 1.1. Reviewed with no changes.
2. Discussion regarding the revised *Radiology* manuscript for VF
 - 2.1. Oliver updated the group that we are waiting for final acceptance of the manuscript.
3. Profile and protocol discussion
 - 3.1. Subsections need to be worked on
 - 3.1.1. A doodle poll will be scheduled to strategize conquering sections
 - 3.2. Brian Fowlkes presented an overview on profile development (Slide deck "ProfileOverview_04May2020")
- Clinical
 - Determine conditions under which reproducibility is achieved
 - Determination of accuracy
- Review of test results using QIBA phantom
 - Establish accuracy of methods in controlled conditions (using phantoms sent to different institutions)
 - Three Systems Tested; Canon, GE Logiq LE9; Philips Epiq7
 - Gain dependence
 - Flow range dependence
 - Depth range dependence
 - Summary of phantom results (differences still being examined)
 - Accuracy: 11.5% mean bias
 - Reproducibility: 10.4% mean within-subject CV (wCV)
 - Mean bias is probably too high due to one system
 - Performance improvements being investigated
- Two studies in umbilical venous flow
 - Pinters et al (JUM 2017)
 - Reproducibility : Inpatient relative SD (CV) = 20.3+/-10.1% (wCV)

- Rubin et al (Abstract for 2020 AIUM meeting and manuscript submitted)
 - Mean within-subject coefficient of variation (wCV)
 - Spectral Doppler method : $46 \pm 17\%$
 - Gaussian surface method : $18 \pm 14\%$
- Potential Profile Claims
 - Claim 1 (cross-sectional): For a measured volume blood flow of X mL/min , a 95% confidence interval for the true flow is X mL/min $\pm 15\%$.
 - Claim 2 (technical performance claim): The volume flow measurement has a within-subject coefficient of variation (wCV) $< 20\%$.
- Discussion of Claims
 - We discussed how these as compare to those of the SWS Profile
 - Claim 1
 - Consider depth range over which the claims would apply
 - Consider velocity range over which the claims would apply
 - Consider is there are any distinction for constant vs. pulsatile flow
 - Tim Hall suggested that one might consider criteria based on PSF/vessel diameter
 - Claim 2
 - Any subclaims that might be application specific
 - Current claim seems aligned with experience with umbilical cord.
 - Consider other applications
 - Dialysis Grafts: Average COV $9.89 \pm 8.02\%$ based on 2D spectral Doppler – Based on analysis of UAB data
 - Brian F. pointed out the QIBA Profile Claim Guidance document
- https://qibawiki.rsna.org/images/a/a1/QIBAProfileClaimGuidance-2017_02_17.pdf

QIBA Volume Flow Profile Info

May 4, 2020

1

Clinical Objectives

- Provide an accurate and reproducible measurement of volumetric blood flow
 - Determine conditions under which reproducibility is achieved
 - Standard scanning procedures
 - Range of vessel sizes
 - Range of depths
 - Determination of accuracy
 - Identify possible conditions where reference standard exist

2

Testing Objectives Achieved

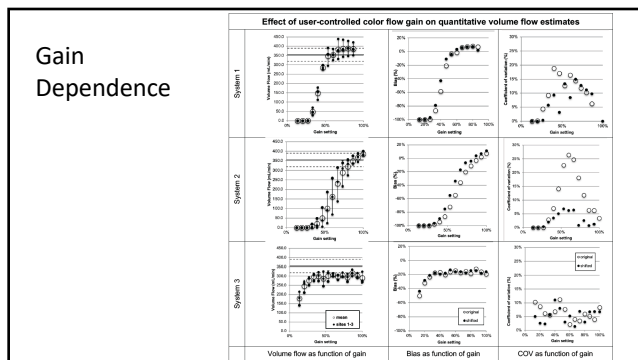
- Establish accuracy of methods in controlled conditions (phantom)
 - Measure bias and variance
 - Range of flow rates
 - 1 to 12 mL/s
 - Range of depths
 - 2.5 to 7 cm
 - Range of Gains
 - 0-100%
 - Constant and Pulsatile Flows
 - Stenotic flow
 - Range of vessel sizes
 - Only 5mm diameter but with stenosis

3

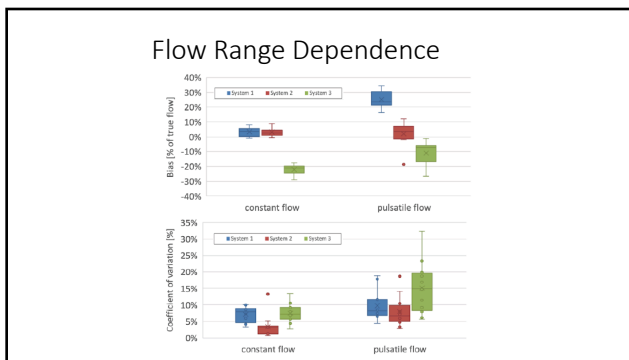
Testing To Be Published

- Three systems
 - Canon Aplio 500 (Canon Medical Systems Inc., Tustin, CA) with a mechanically swept 9CV2 probe
 - GE LOGIQ LE9 (GE Healthcare, Milwaukee, WI) with a mechanically swept RSP6-16 probe
 - Philips EPIQ 7 (Philips Healthcare, Bothell, WA) with an X6-1 2D matrix array

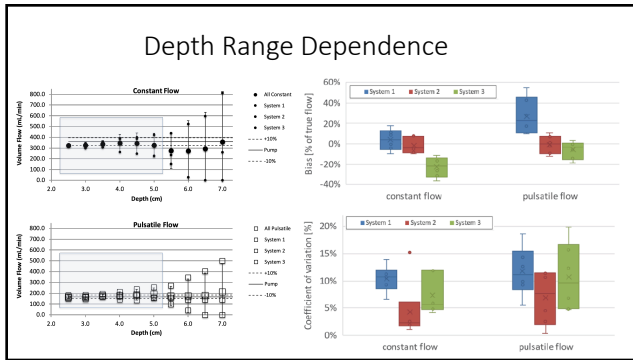
4



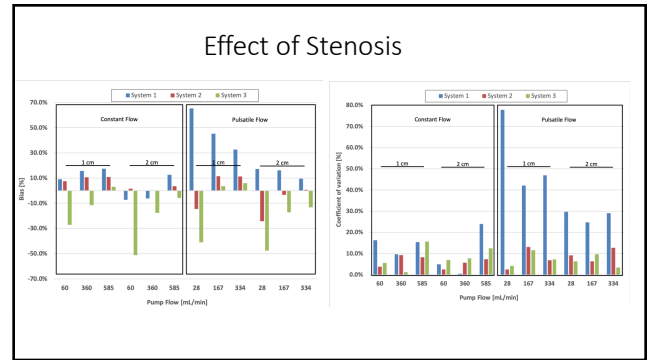
5



6



7



8

Summary of Phantom Results

- Volume flow estimated by 3D color flow ultrasound was
 - Accurate (11.5% mean bias)
 - Reproducible (10.4% mean within-subject COV)
- There were differences among systems that are still being examined.
- There are changes being made to systems expecting to improve performance.

9

Testing Objectives Achieved

- Two studies in human umbilical venous flow
 - Pinter et al. (IJM 2017)
 - Rubin et al. (Abstract for 2020 AIUM meeting and manuscript submitted)

10

Pinter et al.

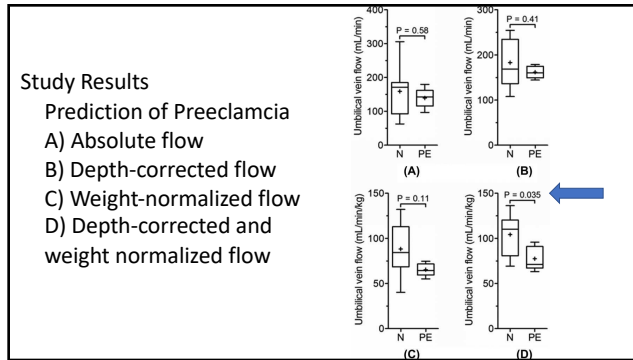
- 35-patient cohort could be classified into 3 groups
 - 21 at-risk patients
 - 5 patients with preeclampsia
 - 9 patients with normal pregnancies
- LOGIQ E9 ultrasound system (GE Healthcare, Milwaukee, WI)
 - 2.0–8.0-MHz bandwidth convex array transducer (RAB6-D)
 - Mechanically- swept array
 - 30 volumes per data set
 - 5-10 minute acquisition time

11

Pinter et al.

- Free cord loop imaged
 - Generally 3 different free loop positions along the length of the umbilical cord
 - 5 patient had only two positions
 - 1 patient had only one position
- Imaging depth range
 - 3.3-11.0 cm

12



13

Study Results - Reproducibility

Table 1. Volume Flow Estimate Variability (All Patients, Absolute Flow)

Statistic	Value
Inpatient relative SD (CV), %	20.3 ± 10.1
Intrameasurement relative SD (CV), %	29.6 ± 9.6
Inpatient relative SE, %	12.1 ± 5.9
Intrameasurement relative SE, %	5.6 ± 1.9

Data are presented as mean ± SD. CV indicates coefficient of variation.

← wCV

14

- Rubin et al.
- 12 subjects
 - High risk gestations
 - Hospitalized during pregnancy
 - Gestation
 - 24 to 35 5/7 weeks
 - Singleton
 - Philips EPIQ 7 ultrasound scanner
 - 2D array transducer
 - X6-1 or XL14-3
 - Body habitus
 - Depth range
 - Availability

15

- Rubin et al.
- Free cord loop imaged
 - At least six separate volume flow measurements were made along the vein
 - Generally three each for 3D volume flow and 2D spectral Doppler method for comparison

16

- Study Results**
- The true flow was unknown for these case (no reference standard)
 - Mean within-subject coefficient of variation (wCV)
 - Spectral Doppler method : 46 ± 17%
 - Gaussian surface method : 18 ± 14%

17

- Potential Associated Claims**
- **Claim 1: (cross-sectional)** For a measured volume blood flow of X mL/min , a 95% confidence interval for the true flow is X mL/min ±15%.
 - **Claim 2 : (technical performance claim)** The volume flow measurement has a within-subject coefficient of variation (wCV) < 20%.

18

Thoughts on Claim 1

- If we look at the results of the QIBA phantom study there can be additional restrictions considered.
- 1) Depth range over which a given accuracy can be achieved.
- 2) Velocity range over which it has been tested.
- 3) Any difference in such specifications between pulsatile and constant flow.
- Need to define the range over which we will intend for the profile to apply.
- What is the rationale?
- What can be stated from work done so far (QIBA round robin study, etc.)
- Reconsider in favor of defining a PSF/vessel diameter criteria

19

Thoughts on Claim 2

- Add any application specific claim(s) (absolute or longitudinal).
- The term “**technical performance claim**” appears appropriate for a similar type of claim.
- This is based on the performance in umbilical venous flow.
 - Consider other sources such as dialysis grafts
 - Average COV $9.89 \pm 8.02\%$ based on 2D spectral Doppler

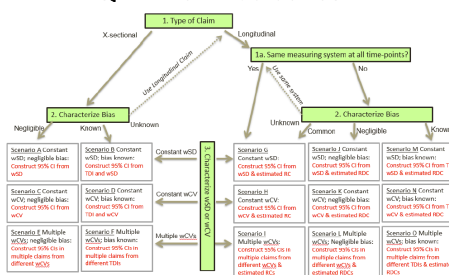
20

Overall Considerations

- What is needed for the clinical purpose?
 - Accuracy
 - Reproducibility
- Claims construction process

21

QIBA Claim Guidance



22