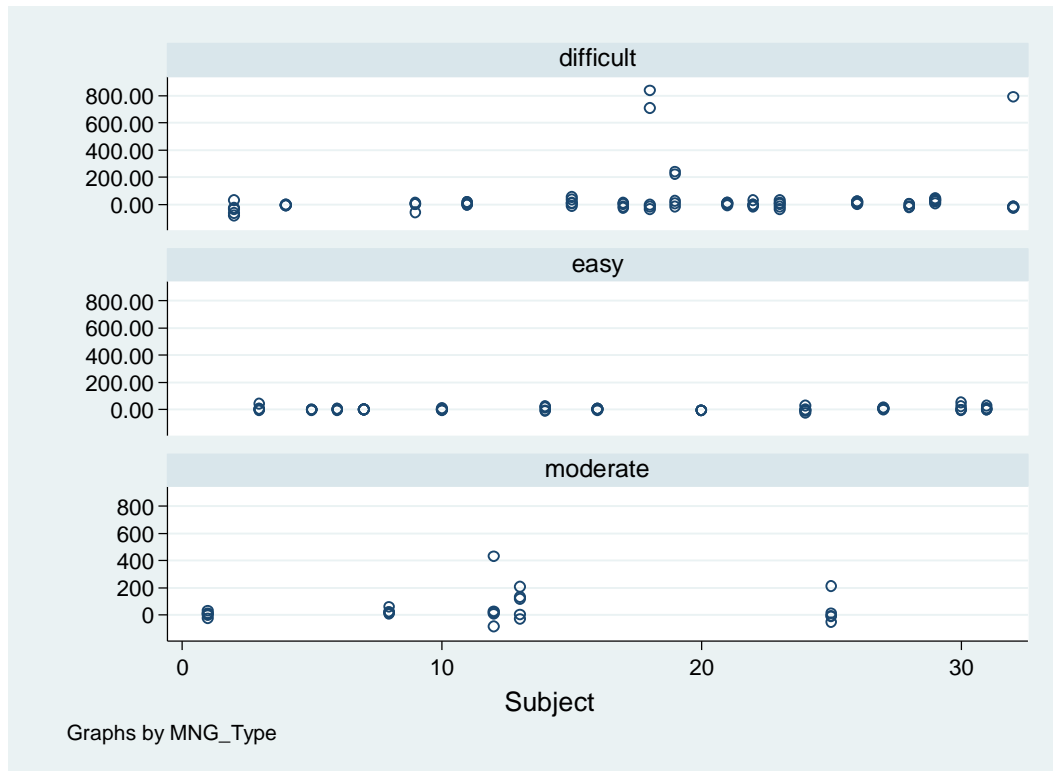


1.

Minimum Detectable Change

	1D [95% CI]*	2D [95% CI]*	3D [95% CI]*
All (N=32)	[-0.3%, 12%]	[1%, 29%]	[-4%, 55%]
Measurable (N=28)	[-1%, 14%]	[-1%, 32%]	[-1%, 41%]
Un-measurable (N=28)	[-8%, 13%]	[-4%, 30%]	[-31, 158%]
2 nd subjective assessment			
– EASY (N=12)	[-1%, 3%]	[-2%, 7%]	[-1, 7%]
Moderate (N=5)	[-4, 23%]	[-17, 53%]	[-4, 89%]
Difficult (N=15)	[-1%, 18%]	[2, 47%]	[-10, 83%]

*: mixed effect model were used, where readers were random effects.



Only <400%

