

# QIBA T-con CIRS E2250 Phantom Measurements

Mark L. Palmeri, M.D., Ph.D.

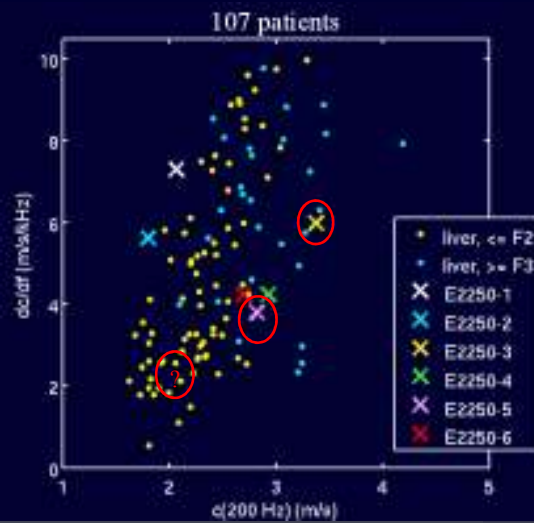
Department of Biomedical Engineering  
Pratt School of Engineering  
Duke University

2014-07-11



Duke DEPARTMENT OF Biomedical Engineering

## CIRS E2250:1-6



Duke DEPARTMENT OF Biomedical Engineering

## Acoustic Attenuation

- E2250-3: 0.59 dB/cm/MHz
- E2250-5: 0.34 dB/cm/MHz
- Measured from 2-5 MHz; most-likely nonlinear, but linearly approximated
- Not independent of setting viscosity



## Action Items

- Ted / CIRS will make samples 3, 5 and a stiffer version of 1 / 2 to send to sub-sites
- Sub-site testing first (Duke, Mayo, Rochester?, SSI?)
  - CIRS can accommodate a total of 9 phantoms
  - Mark will f/u with SSI point person
- Need to discuss formal Phase II plan during next general call

